

San Gabriel River – East Fork The Bridge to Nowhere

San Gabriel River Ranger Station to the Narrows and the Bridge to Nowhere

San Gabriel River Ranger District (Angeles National Forest)

110 N. Wabash Ave.

Glendora, CA 91741 (626) 335-1251

Monday thru Friday 8:00 a.m. to 4:30 p.m.

10 mile (210Fwy East Fork Ranger Station.

From Interstate 210 in Azusa, exit Azusa Ave. Drive 12 miles north on San Gabriel Can. Rd. (Hwy. 39) to the trailhead at the West Fork of the San Gabriel River. Call (626) 335-1251 for current conditions and additional information

Directions to Hike

Drive to the end of the East Fork road. Park. Follow the fire road for .5 miles until the trail drops to the canyon floor and follows the river. There are red arrows painted on rocks on both sides of the various river crossings.

Adventure Pass is required.



Bridge to Nowhere (San Gabriel River - East Fork)

San Gabriel River - East Fork

Highlights: Lovely stream, cascades, shear granite walls, mysterious Bridge to Nowhere

Near: Azusa, CA

Scenery:

Distance: 9 miles round trip

Elevation Gain: 1000 ft

Hike Time: 4.5 hours

Difficulty: Moderate

Trail Condition: OK, but a few difficult spots

Hike Type: Out and Back

Summary: This trip takes you along the banks of the east fork of the San Gabriel River. While the riverbanks are wooded and quite lovely, most of the trail traverses the rim above the high water line and most of your travel is through scrub brush. The highlight of the hike is a mysterious bridge built over the east fork in 1936, which has no road leading to it. Actually, in the 1930's a road did lead to it, but was swept away by floods in 1938.

There are some small trails that lead down to the stream just after you cross the bridge. This is a stunning setting with shear pink tinted granite walls, roaring cascades, and the lovely bridge in the background.

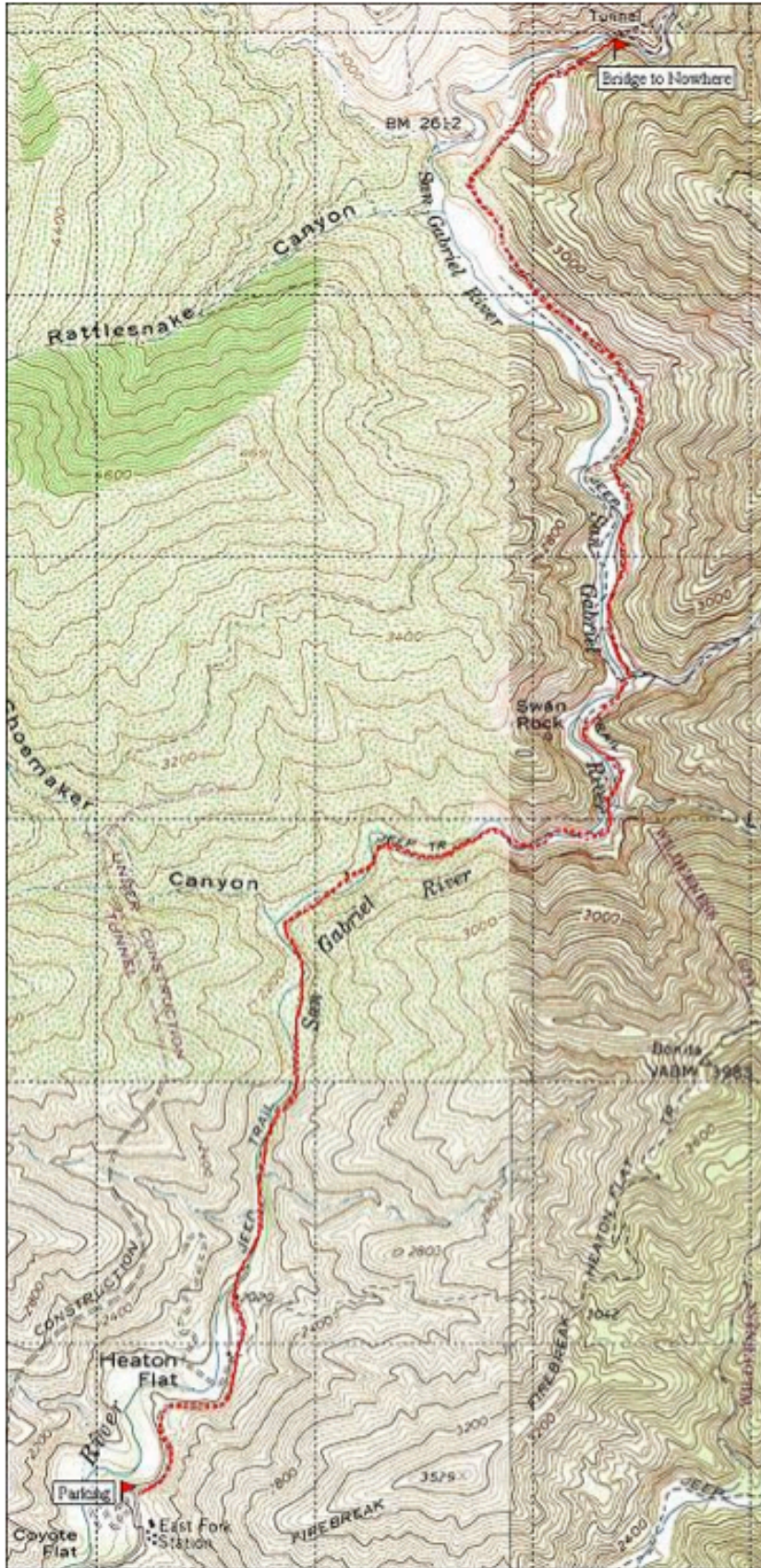
Route finding was a bit challenging with many day use trails mixed in with the main trail, washed out sections of trail, and over a half dozen stream crossings (bring waterproof boots even when the water is low).

Trailhead: From Interstate 210 freeway, exit on Azusa and head north 10 miles or so, paralleling the San Gabriel Dam on your right. Turn right on East Fork Road and continue 8 more miles to the East Fork Station, where the road dead-ends. Note that if you go around a hairpin 180-degree turn on East Fork Road, you missed the road into the Sheep Mountain Wilderness. The trailhead is short distance down an obvious service road. (Lat:34.2372 Lon:-117.76546)

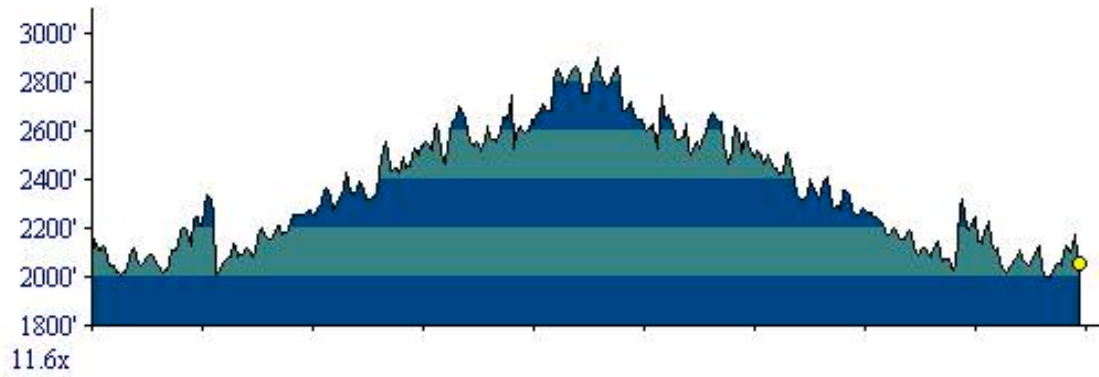
Best Seasons: Fall, winter, Spring

Ranger Contact: Angeles National Forest (626) 335-1251

Notice: Traveling in the backcountry can be hazardous. You are responsible for informing yourself about these hazards and taking necessary precautions. A current guidebook and proper equipment are essential for safe enjoyment of the hikes.



Printed from TOPOI ©2011 National Geographic Holdings (www.topo.com)



Printed from TOPO! ©2001 National Geographic Holdings (www.topo.com)